

With features specifically designed for professional use...

- + ADJUSTABLE FEET FROM THE INSIDE
- + LARGE ERGONOMIC HANDLES
- + DRAWERS ON TELESCOPIC RAILS
- + SAFETY GLASS
- + DIGITAL THERMOSTAT
- + AUTOMATIC DEFROST
- + EASY ACCESS TO MACHINE UNIT



+ NEW DESIGN

+ ABOUT ECO-LINE

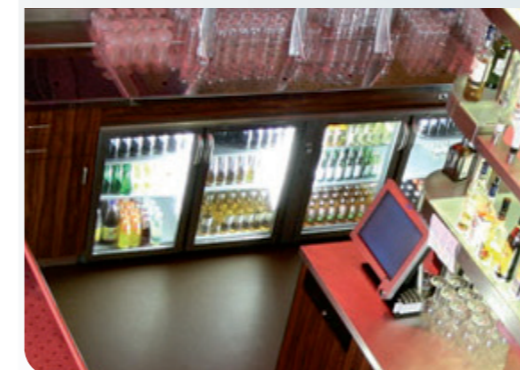
Eco-Line is a range of **high capacity bottle coolers** offering high performance cooling ... with a unique design it allows the freedom to go with any interior of your bar (traditional, classic or modern).

It also offers the **quality and robustness** needed for all occasions. All components have proven technology for many years in the field and offer **flexibility and reliability**;

+ ABOUT GAMKO

European market leader, Gamko BV is manufacturer and supplier of refrigeration equipment for the professional hospitality industry.

With experience of over 50 years Gamko provides answers, tailored and adapted, to the requirements of all entrepreneurs in the catering and hospitality trade;



PÉRICARD CONSEIL : (+33)(0)6 302 919 37

ECO-LINE

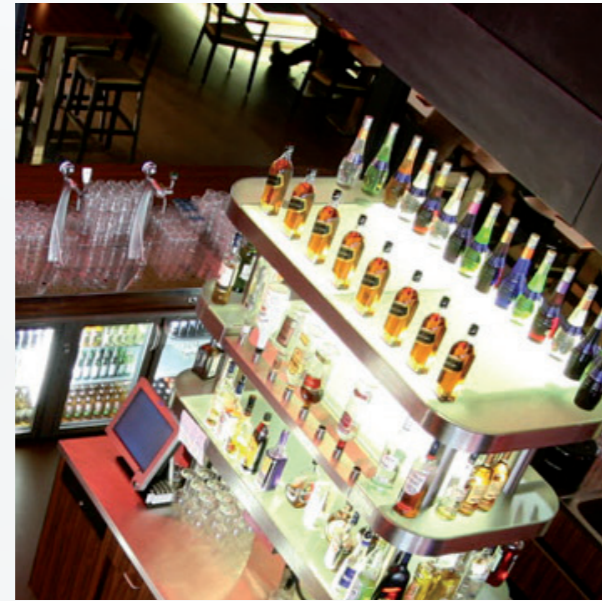
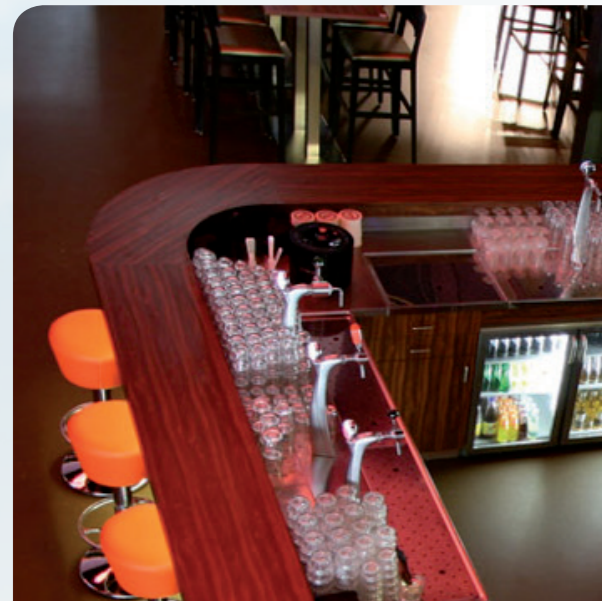
UNDER COUNTER BOTTLE COOLERS



CONFIGURE YOUR BAR TO YOUR REQUIREMENTS!



+ NEW DESIGN



CONFIGURE YOUR BAR TO YOUR REQUIREMENTS !



ECO-LINE

UNDER COUNTER BOTTLE COOLERS

A full range of highly efficient, high capacity bottle coolers...

Plug ready or remote, **anthracite or stainless finish**, these coolers are equipped with solid or glass doors with large forceful handles. With numerous choices that will enhance your **storage capabilities**. You can configure your bottle cooler and add drawers instead of doors, to make your personalized bar.



+ NEW DESIGN

CONFIGURATION
OPTIONS



+ "DISCOVER THE MANY CONFIGURATION OPTIONS FOR ECO-LINE ..."

PERSONAL
ATMOSPHERE



+ "AND MAKE A PERSONAL ATMOSPHERE OF YOUR BAR"

CONFIGURATION OPTIONS

+ DRAWER SEGMENTS

ADD DRAWERS TO YOUR ECO-LINE

Resolutely practical to optimize the organization of your bar, the drawers come on telescopic rails and can be mounted on all Eco-Line models. You can replace full doors with blocks of 2 or 3 equal drawers, 2 drawers asymmetric.



+ LOCKABLE

Secure your draws and doors by selecting the lock option which is available on all models.



CAPACITY SHELVES AND DRAWERS

Capacity per shelf : 50 bottles of 33cl
Capacity per drawer ECO/3-5-6 : 42 bottles of 33cl



● ECO/3DA

2 x 1/2 solid Anthracite drawer
Maximum height 350 mm

● ECO/5DA

2 x solid Anthracite drawers
(1 x 5/12 draw and 1 x 7/12 draw).
Max. top drawer Height 277 mm
Max. bottom draw Height 406 mm

● ECO/6DA

3 x 1/3 Anthracite drawers
Maximum height 210 mm

● ECO/3DCS

2 x 1/2 solid Stainless steel drawer
Maximum height 350 mm

● ECO/5DCS

2 x solid Stainless steel drawers
(1 x 5/12 draw and 1 x 7/12 draw)
Max. top drawer Height 277 mm
Max. bottom draw Height 406 mm

● ECO/6DCS

3 x 1/3 Stainless steel drawers
Maximum height 210 mm

Reference for locks:
● 013050219

ECO-LINE "SOLID DOOR"

PLUG READY BOTTLE COOLER



● **ECO/22MU**
2 doors, exterior Anthracite finish
With 4 adjustable shelves
Volume : 325 L
Storage capacity : 330 x 33 cl
Power consumption : 370 W
Dimensions : L 1462 x P 513 x H 860/880 mm
(without feet 840 mm H)



● **ECO/22MUCS**
2 doors, stainless steel Finish



● **ECO/222MU**
3 Doors, exterior Anthracite finish
With 6 adjustable shelves
Volume : 495 L
Storage capacity : 509 x 33 cl
Power consumption : 370 W
Dimensions : L 2002 x P 513 x H 860/880 mm
(without feet 840 mm H)



● **ECO/222MUCS**
3 Doors, stainless steel finish



● **ECO/2222MU**
4 Doors, exterior Anthracite finish
With 8 adjustable shelves
Volume : 630 L
Storage capacity : 688 x 33 cl
Power consumption : 370 W
Dimensions : L 2542 x P 513 x H 860/880 mm
(without feet 840 mm H)



● **ECO/2222MUCS**
4 Doors, stainless steel finish

FOR REMOTE APPLICATION



● **ECO/22VVS**
2 doors, exterior Anthracite finish
With 4 adjustable shelves
Volume : 325 L
Storage capacity : 322 x 33 cl
Power consumption : 60 W
Dimensions : L 1162 x P 513 x H 860/880 mm
(without feet 840 mm H)



● **ECO/22VVS-CS**
2 doors, stainless steel Finish



● **ECO/222VVS**
3 Doors, exterior Anthracite finish
With 6 adjustable shelves
Volume : 495 L
Storage capacity : 501 x 33 cl
Power consumption : 60 W
Dimensions : L 1702 x P 513 x H 860/880 mm
(without feet 840 mm H)



● **ECO/222VVS-CS**
3 Doors, stainless steel finish



● **ECO/2222VVS**
4 Doors, exterior Anthracite finish
With 8 adjustable shelves
Volume : 630 L
Storage capacity : 680 x 33 cl
Power consumption : 60 W
Dimensions : L 2242 x P 513 x H 860/880 mm
(without feet 840 mm H)



● **ECO/2222VVS-CS**
4 Doors, stainless steel finish

ECO-LINE "GLASS DOORS"

PLUG READY BOTTLE COOLER



● **ECO/22GMU**
2 doors, exterior Anthracite finish
With 4 adjustable shelves
Volume : 325 L
Storage capacity : 330 x 33 cl
Power consumption : 406 W
Dimensions : L 1462 x P 513 x H 860/880 mm
(without feet 840 mm H)



● **ECO/22GMU-CS**
2 doors, stainless steel Finish



● **ECO/222GMU**
3 Doors, exterior Anthracite finish
With 6 adjustable shelves
Volume : 495 L
Storage capacity : 509 x 33 cl
Power consumption : 432 W
Dimensions : L 2002 x P 513 x H 860/880 mm
(without feet 840 mm H)



● **ECO/222GMU-CS**
3 Doors, stainless steel finish



● **ECO/2222GMU**
4 Doors, exterior Anthracite finish
With 8 adjustable shelves
Volume : 630 L
Storage capacity : 688 x 33 cl
Power consumption : 458 W
Dimensions : L 2542 x P 513 x H 860/880 mm
(without feet 840 mm H)



● **ECO/2222GMU-CS**
4 Doors, stainless steel finish



● **ECO/22GVVS**
2 doors, exterior Anthracite finish
With 4 adjustable shelves
Volume : 325 L
Storage capacity : 322 x 33 cl
Power consumption : 112 W
Dimensions : L 1162 x P 513 x H 860/880 mm
(without feet 840 mm H)



● **ECO/22GVVS-CS**
2 doors, stainless steel Finish



● **ECO/222GVVS**
3 Doors, exterior Anthracite finish
With 6 adjustable shelves
Volume : 495 L
Storage capacity : 501 x 33 cl
Power consumption : 138 W
Dimensions : L 1702 x P 513 x H 860/880 mm
(without feet 840 mm H)



● **ECO/222GVVS-CS**
3 Doors, stainless steel finish



● **ECO/2222GVVS**
4 Doors, exterior Anthracite finish
With 8 adjustable shelves
Volume : 630 L
Storage capacity : 680 x 33 cl
Power consumption : 164 W
Dimensions : L 2242 x P 513 x H 860/880 mm
(without feet 840 mm H)



● **ECO/2222GVVS-CS**
4 Doors, stainless steel finish