

Průvodce výběrem krájecích disků pro kráječe zeleniny





Stainless steel shredding discs

2 mm to 10 mm



AS2X
653743

2 mm



AS3X
653744

3 mm



AS4X
653745

4 mm



AS6X
653746

6 mm



AS8X
653747

8 mm



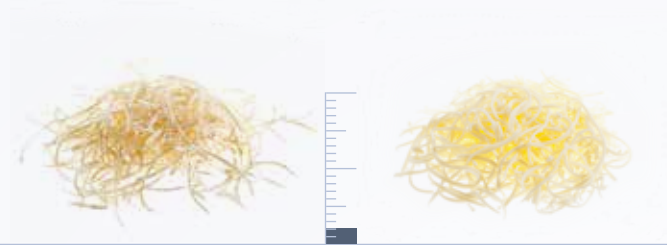
AS10X
653748

10 mm



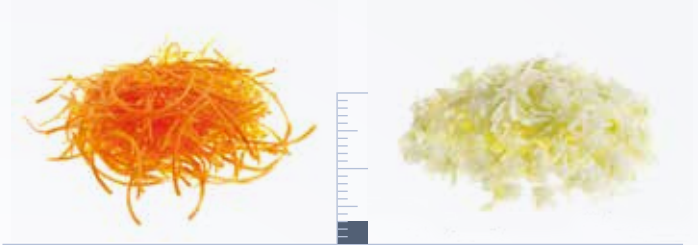
Stainless steel grating discs

2 mm to 9 mm



J2X
653773

2 mm



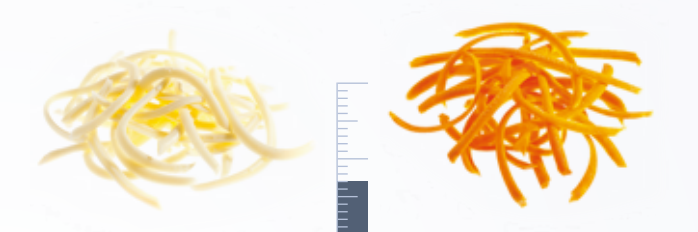
J3X
653774

3 mm



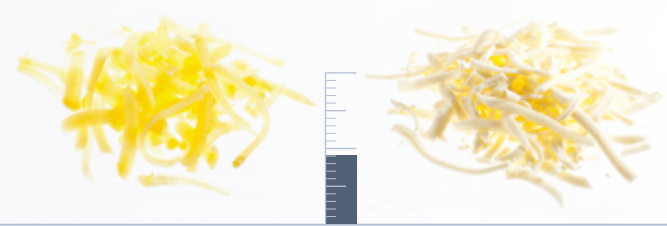
J4X
653775

4 mm



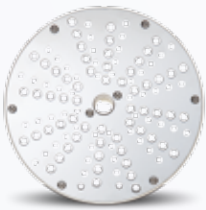
J7X
653776

7 mm



J9X
653777

9 mm



KX
653778

for knoedeln/bread/potatoes



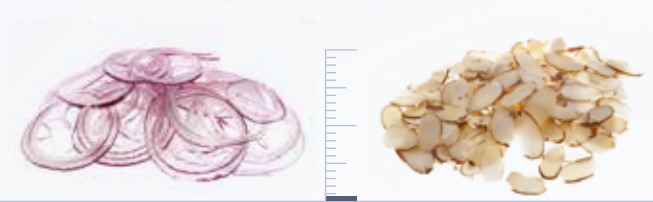
PX
653779

for parmesan/bread/chocolate



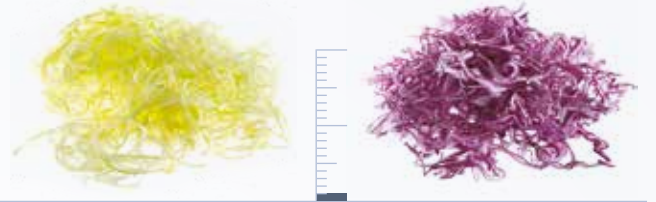
Stainless steel slicing discs

0.6 mm to 4 mm



C06S
653728

0.6 mm



C1S
653729

1 mm



C2S
653730

2 mm



C3S
653731

3 mm



C4S
653732

4 mm





Stainless steel slicing discs

5 mm to 13 mm



C5S/C5PS
653733 / 650048

5 mm



C6S/C6PS
653735 / 650049

6 mm



C8S/C8PS
653737 / 650050

8 mm



C10PS
650051

10 mm



C12PS
650053

12 mm



C13PS
650054

13 mm



CW/CWP



Stainless steel corrugated slicing discs

2 mm to 10 mm



2 mm

C2WS

653749



3 mm

C3WS

653750



6 mm

C6WS

653751



8 mm

C8WP

650055



10 mm

C10WP

650056



CP

Stainless steel slicing disc for mozzarella / solid cheese

10 mm



Presser with special non-stick coating



C10PSM

650052

10 mm



C10PSM+MT10T

650052+653568

10x10x10 mm

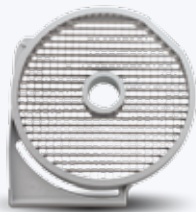


C10PSM+MT20T

650052+653570

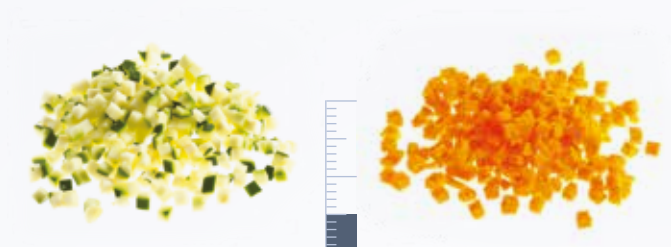
10x20x20 mm

MT



Dicing grids to be combined with CP/CWP slicers

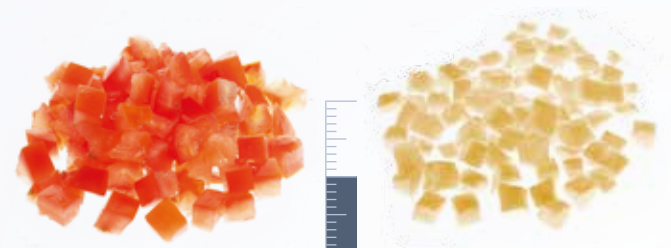
5x5 mm to 20x20 mm



C5PS+MT05T 5x5x5 mm
650048+653566



C8PS+MT08T 8x8x8 mm
650050+653567



C10PS+MT10T 10x10x10 mm
650051+653568



C12PS+MT12T 12x12x12 mm
650053+653569



C10WP+MT20T 10x20x20 mm
650056+653570



C13PS+MT20T 13x20x20 mm
650054+653570



Grids for chips to be combined with CP/CWP slicers

6, 8 and 10 mm

FT



C6PS+FT06 6x6 mm
650049+653571



C8PS+FT08 8x8 mm
650050+653572



C10WP+FT10 10x10 mm
650056+653573

